



Ensure Consistent Weld Quality

Insight Centerpoint™



Knowledge Is Power

YOUR CHALLENGES



Attracting and Retaining Skilled Welders



Finding and Fixing Missed and Bad Welds



Satisfying Customer Demands

YOUR RESPONSES



Attract and Hire More Welders



Provide More Training



Conduct More Inspections



Discount Your Prices More

WHAT IF YOU COULD:



Guide welders step by step through the entire fabrication process?



Understand what impacts weld quality?

Insight Centerpoint™

The real-time welder feedback solution that provides guidance and control within the weld cell.

✓ Reduce training time.

Guide welders through the weld sequence in real time.

✓ Ensure quality welds.

Contain weld defects early and control your weld operation by monitoring every parameter of every weld.

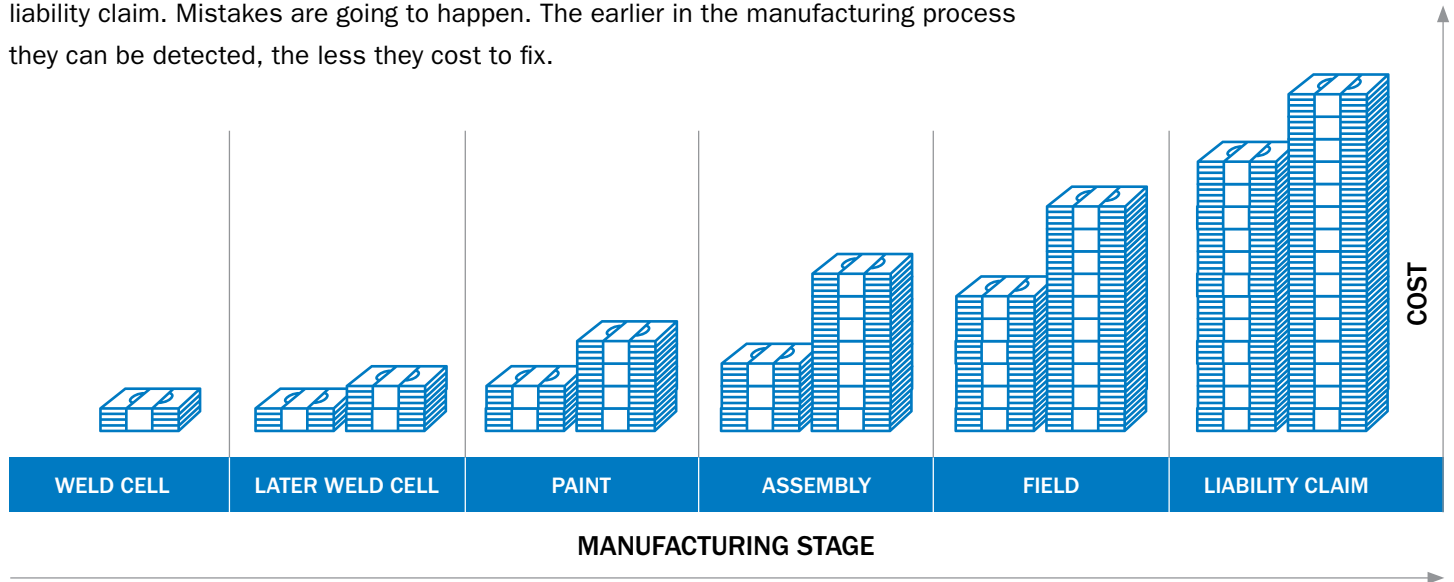
✓ Reduce costs.

Alert welders if a weld is missed or is outside of acceptable parameters, allowing it to be corrected cost-effectively.



STOP LOSING MONEY DUE TO MISSED OR DEFECTIVE WELDS!

The cost of missed or defective welds can be staggering if they result in a field failure or liability claim. Mistakes are going to happen. The earlier in the manufacturing process they can be detected, the less they cost to fix.



WORKFLOW™: GIVE WELDERS CLEAR, COMPLETE GUIDANCE IN FABRICATING.

Gain additional control of your fabrication process with documentation and instructional aids for pre-welding, intra-weld and post-welding activities through embedded videos, images, audio and other file types.



Insight Centerpoint™ provides:



Safety warnings



Reminders



Fixture loading directions



Part packing instructions



Company announcements



PART TRACKING™: GIVE WELDERS COMPLETE CONTROL, FROM THE FIRST WELD TO THE LAST.

Guide welders through the weld sequence in real time using visualizations of the part.
Contain missing and incomplete welds while supporting manual welding best practices.

Identifies acceptable or non-conforming welds

Indicates the current activity status

Tracks all results by welder

The screenshot displays the Miller Insight Centerpoint software interface. At the top, it shows the Miller logo, the system name 'Continuum 2', the date and time 'Jun 25, 2018 12:52:12', and the status 'Normal Operation Since 12:42:14 PM'. The main area features a 3D model of a part with three weld points labeled 11, 12, and 13. A clock icon is visible on the left side of the model. Below the model are buttons for 'End Part', 'Ignore', 'Join', and 'Set Activity'. On the right, there is a 'WORKFLOW PLAYLIST' section with a table of metrics.

IN-CYCLE	
START	12:50:00 PM
END	
WELDS EXPECTED	17
COMPLETED	11
FALSE ARCS	0
IGNORED	0
EXTRAS	0
CYCLE TIME	02:12.

Below the table, the activity status is shown as 'NORMAL OPERATION' and 'CLAMP TIME 02:12.3 s'.

Shows a preview of operational steps

Moving target guides the welder through proper welding sequence

Allows selection and tracking of non-welding activities

INTEGRATED REPORTS: GET IMMEDIATE ACCESS TO EXTENSIVE INFORMATION.

Review a wide range of information — including preconfigured management charts and reports about weld processes, productivity and business metrics. This information is stored in an SQL server database, which contains welding data from multiple Insight Centerpoint sources.

Part analysis reports

- Part summary
- Parts produced
- Part faults per time
- Faults on a single part
- Weld counts per part
- Parts with missing welds

Productivity reports

- Arc efficiency
- Parts per hour
- Welds per hour
- Downtime analysis
- Cycle time

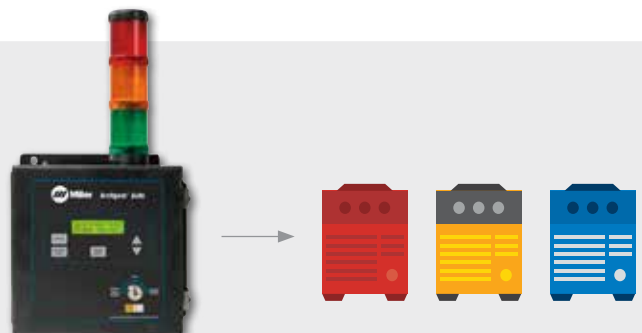
Cost analysis reports

- Cost per weld
- Cost per part
- Wire usage
- Gas usage

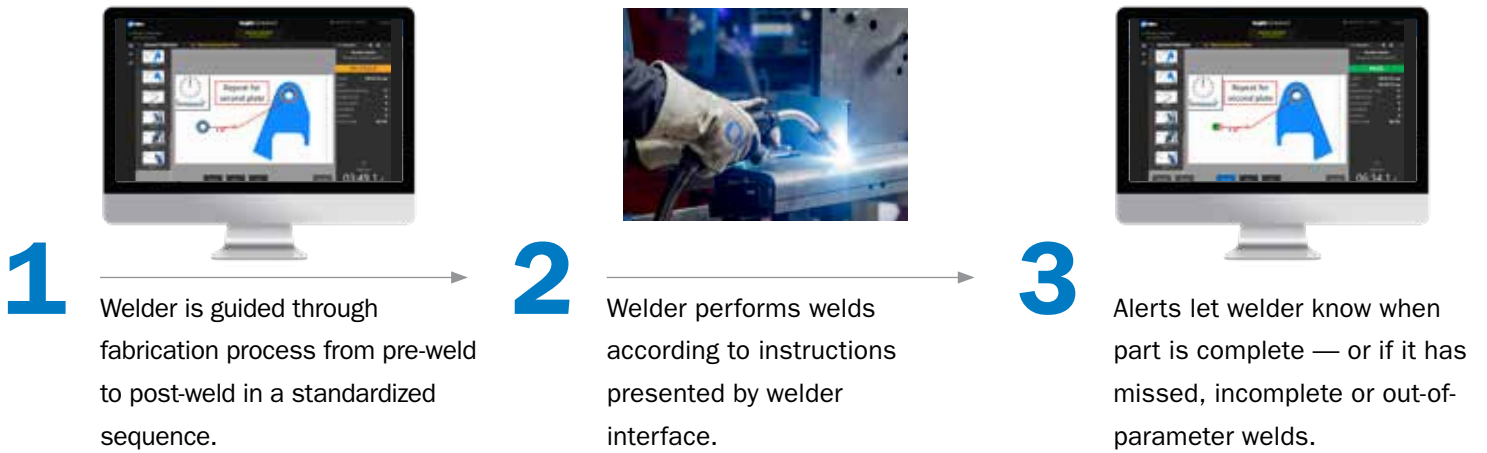


UNIVERSAL BRAND CAPABILITY

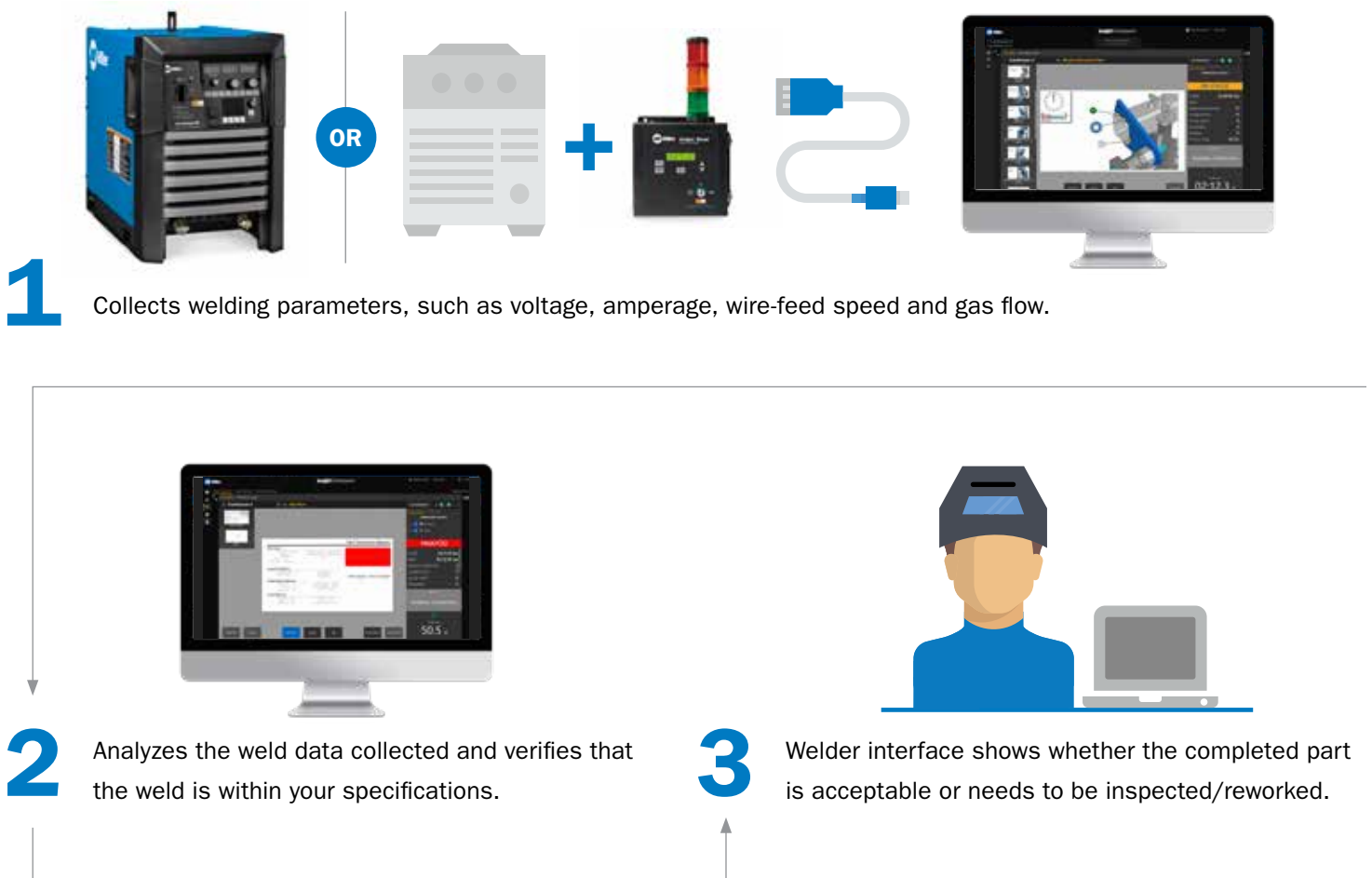
With an ArcAgent™ module, you can have the power of Insight Centerpoint on any machine from any manufacturer, giving you a complete picture of your facility.



HOW IT WORKS — MANUAL WELDING



HOW IT WORKS — FIXED OR FLEXIBLE AUTOMATED WELDING





Contact us today.

insight@millerwelds.com

MillerWelds.com/insight

#247698 © 2021 Miller Electric Mfg. LLC

Miller, the Miller logo and The Power of Blue are registered trademarks of Illinois Tool Works, Inc.
ArcAgent, Insight Centerpoint, Part Tracking and WorkFlow are trademarks of Illinois Tool Works, Inc.

